

The
Occupational Alliance
for
Risk Science
(OARS)

Jimmy L. Perkins, PhD, CIH
UT School of Public Health
May 23, 2012

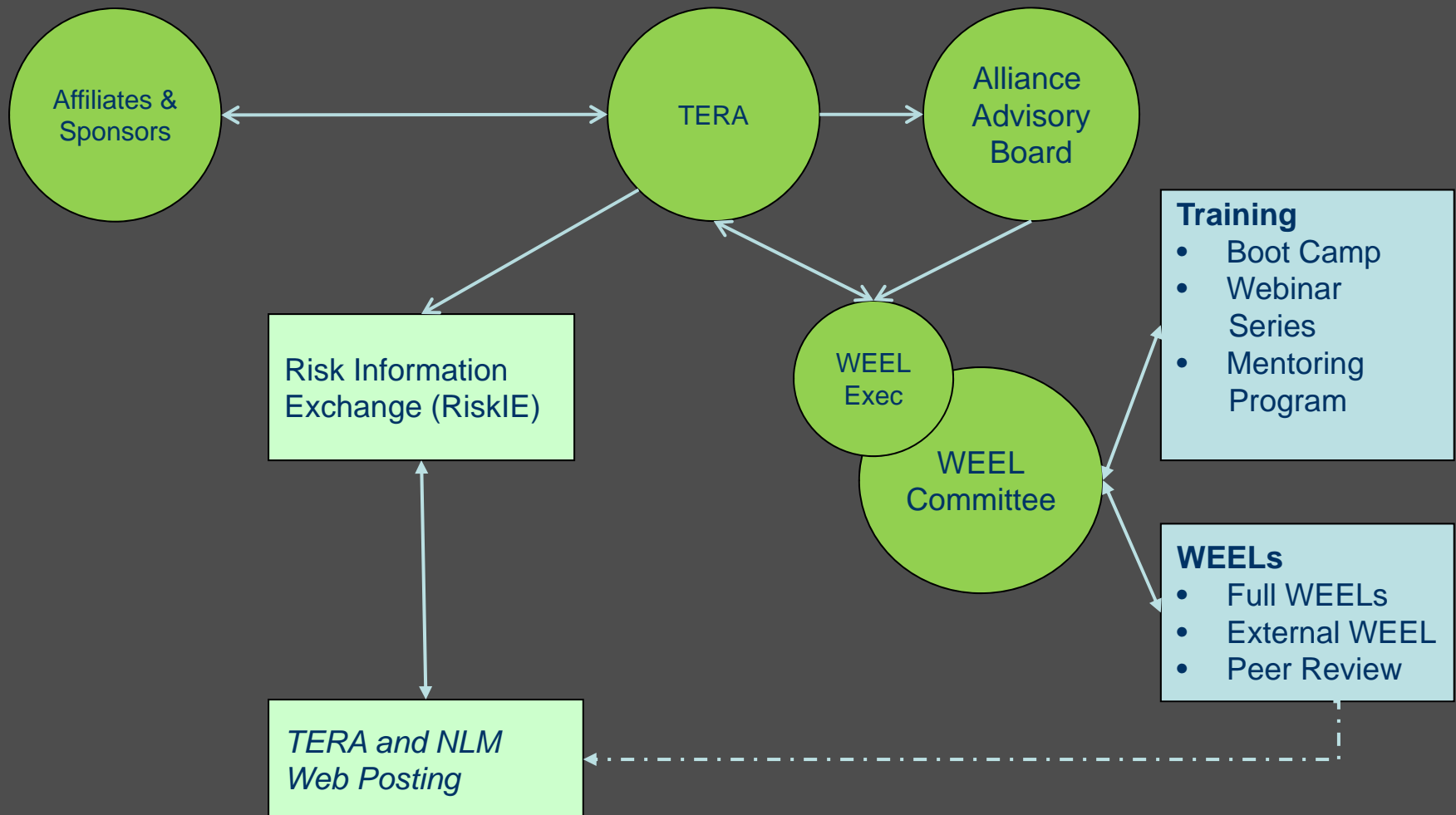
OARS

- An *initiative* managed by TERA to:
- Facilitate sharing of information with workers and occupational health and safety professionals
- Provide a forum for information exchange about exposure guidance for chemical stressors, methods for improving occupational risk assessments, and training opportunities
- A home for exposure guide values, and related guideline documents, for chemical stressors

WHY DEVELOP OARS?

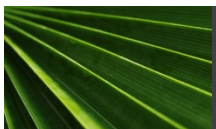
- Professionals in occupational risk assessment continue to see the value of setting occupational exposure limits (OELs) as a central tool for worker health protection. However we need better processes to:
 - Eliminate duplication of efforts – too many chemicals and not enough resources
 - Ensure education and proper use of different sources of information driven by a complex regulatory environment (OELs versus DNELs versus hazard bands)
 - Provide mechanisms for technology transfer among risk assessment specialties to ensure best use of the current science
- These needs can be addressed through better collaboration through an alliance of interested parties

Occupational Alliance for Risk Science



AFFILIATES AND SPONSORS

- OARS encourages stakeholder engagement through:
 - Open and transparent processes
 - Invitation of stakeholders to attend science deliberations and provide data
 - Active outreach and communication
 - Information sharing via web posting, free on-line databases (RiskIE), and active outreach to affiliates
 - Opportunities for direct involvement
 - Sponsorship of OEL development for chemicals of interest to external parties



OARS ADVISORY BOARD

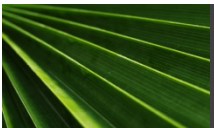
- Advisory Board Roles:
 - Statements on emerging risk methods to support harmonization and technology transfer
 - Communicate with leading entities in occupational risk assessment to share best practices
 - Support for the WEEL Committee
 - OEL request prioritization
 - Review or input on Administrative Operating Procedures (AOPs)
 - Provide guidance on COI issues
 - External stakeholder comment disposition

WEELS

- Workplace Environmental Exposure Levels™ (WEELS) are health-based guide values for chemical stressors. The WEELS provide air concentrations intended to protect most workers from adverse health effects related to occupational chemical exposures
- WEELS have been derived by a committee of the American Industrial Hygiene Association (AIHA) that has been active for over 35 years
- WEELS for approximately 120 substances – focus on high priority chemicals lacking other published OELs

CURRENT STATUS OF WEEL COMMITTEE

- August 2011: AIHA Board votes to discontinue WEELs
- October 2011: WEEL members pass unanimously proposal to establish an OEL advisory group managed by TERA
- January 2012: AIHA Board votes to transfer WEELs to TERA and OARS goes “live”
- February 2012: Existing AOPs adapted and ratified by WEEL members
- March 2012:
 - OARS Advisory Board Charter in development
 - Transfer and uploading of WEEL values on TERA website in progress
- June 2012: First OARS WEEL meeting planned



WEELS UNDER OARS

- Some changes for improved public health impact
 - WEEL values and their full documentation will be available with no charge on TERA website to increase access
 - New option for stakeholders to sponsor a WEEL and provide a data package to facilitate the process
 - New option providing independent review for submitted OELs to assist stakeholders ensure their internal OELs are sound
- Despite the changes - the high quality science and committee processes remain the same

MORE INFORMATION?

Contact Andrew Maier

maier@tera.org

513-542-7475 X16

See the OARS webpage

www.tera.org/oars

